

# SOUTH WAIRARAPA DISTRICT COUNCIL

24 FEBRUARY 2016

---

## AGENDA ITEM C1

### STATEMENT FROM MARTINBOROUGH COMMUNITY BOARD

---

#### **Purpose of Report**

To submit documents tabled at the 1 February 2016 meeting to Council along with a statement from the Martinborough Community Board.

#### **Recommendations**

Officers recommend that the Council:

1. *Receive the information.*
2. *Consider the information presented in Appendix 1 and Appendix 2 of this report when debating agenda item 'D1 Waihinga Centre'.*

#### **1. Summary**

On the 1 February 2016, the Martinborough Ratepayers and Residents Network presented during the public participation forum at the Martinborough Community Board meeting. Information was provided to members and alternative community centre concept plans were tabled (Appendix 1).

The following resolution was passed at the meeting:

#### **Martinborough Ratepayers and Residents Network**

*MCB RESOLVED (MCB 2016/01):*

1. To receive the information.
2. To organise a workshop for members to discuss and consider the presentation alongside the Board's 3-Year Plan and Council's Annual Plan and Long Term Plan.
3. To communicate an agreed position, along with the tabled and supplied information from the Martinborough Ratepayers and Residents Network, to Council for consideration at the 24 February 2016 meeting.

*(Moved Cornelissen/Seconded Colenso)*

Carried

In fulfilment of point 2, a statement has been provided to Council for consideration (Appendix 2).

## **2. Appendices**

Appendix 1 – Information from the Martinborough Ratepayers and Residents Network

Appendix 2 – Statement from the Martinborough Community Board

Contact Officer: Suzanne Clark, Committee Secretary

Reviewed By: Paul Crimp, Chief Executive

# **Appendix 1 – Information from the Martinborough Ratepayers and Residents Network**

**TO                    MARTINBOROUGH COMMUNITY BOARD**

**FROM                MARTINBOROUGH RATEPAYERS & RESIDENTS NETWORK**

**DATE                21 JANUARY 2016**

**RE                    REQUEST FOR CONSIDERATION OF OPTIONS FOR  
MARTINBOROUGH'S TOWN HALL & COMMUNITY CENTRE**

The Network gratefully accepts the Martinborough Community Board's invitation to attend its 1 February meeting to discuss the Network's request for the Board and the SWDC to consider options for the Town Hall & Community Centre in addition to the Waihinga Centre proposal – and for the District's ratepayers and residents to be directly involved in selection of one option. This request reflects strong concern that the community has not been properly consulted in the course of the SWDC making significant decisions to date on the proposed Waihinga Centre – and that without such consultation, no further expenditure should be undertaken on it.

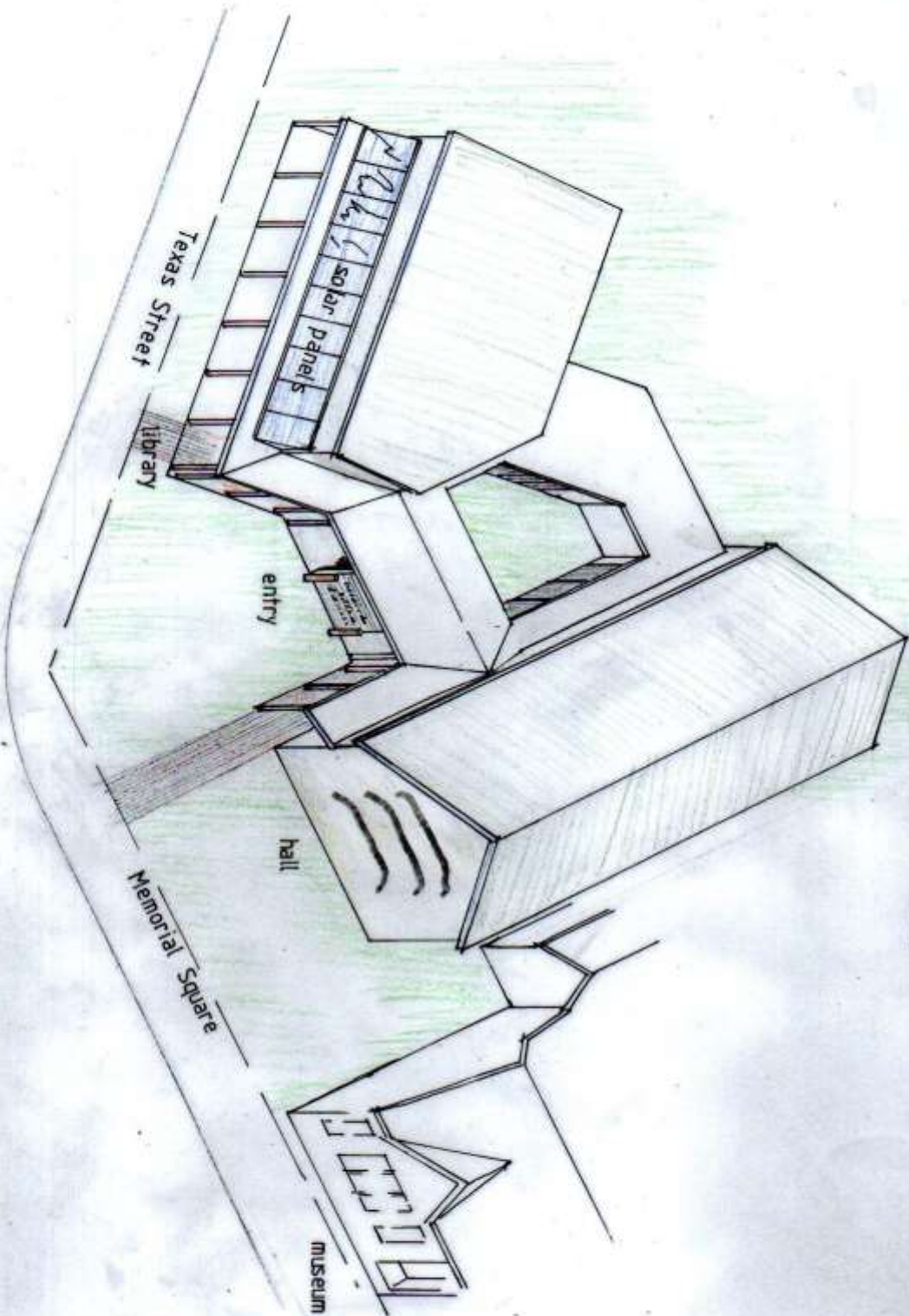
The Network will present to the Martinborough Community Board on:

1. Proposed PRINCIPLES that should be the basis for the planning and design of any future Town Hall & Community Centre for Martinborough.
2. The NEW COMMUNITY CENTRE CONCEPT as one option for consideration and proper community consultation in addition to the proposed Waihinga Centre. (The illustration below will support discussion on this point).
3. Processes for PROPER CONSULTATION with the community overall, including initiatives for engaging people in dialogue on any future Town Hall & Community Centre and for enabling them to have a direct say in the selection of one option from among two or more. The Network has begun such initiatives since meeting the SWDC on 2 December.

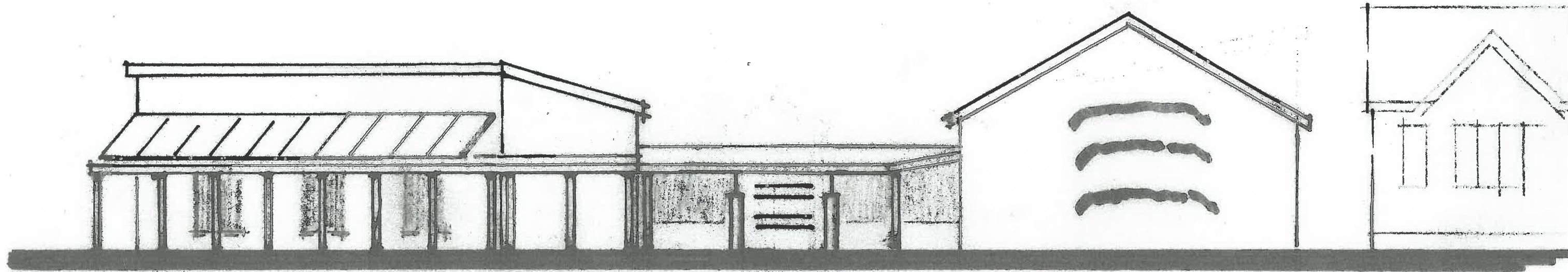
## **REQUEST**

On the basis of points presented here and other supporting material, we request that the Board ask the SWDC to refrain from any further expenditure of the proposed Waihinga Centre and begin proper community consultation on options such as the New Community Centre Concept (alongside the proposed Waihinga Centre). We further request that the Board adopt the proposed principles and perhaps others which the Board considers serve the best interests of all Martinborough people.

A New Community Centre Concept for Martinborough



Tabbed 1 February 2016



library

entrance

hall

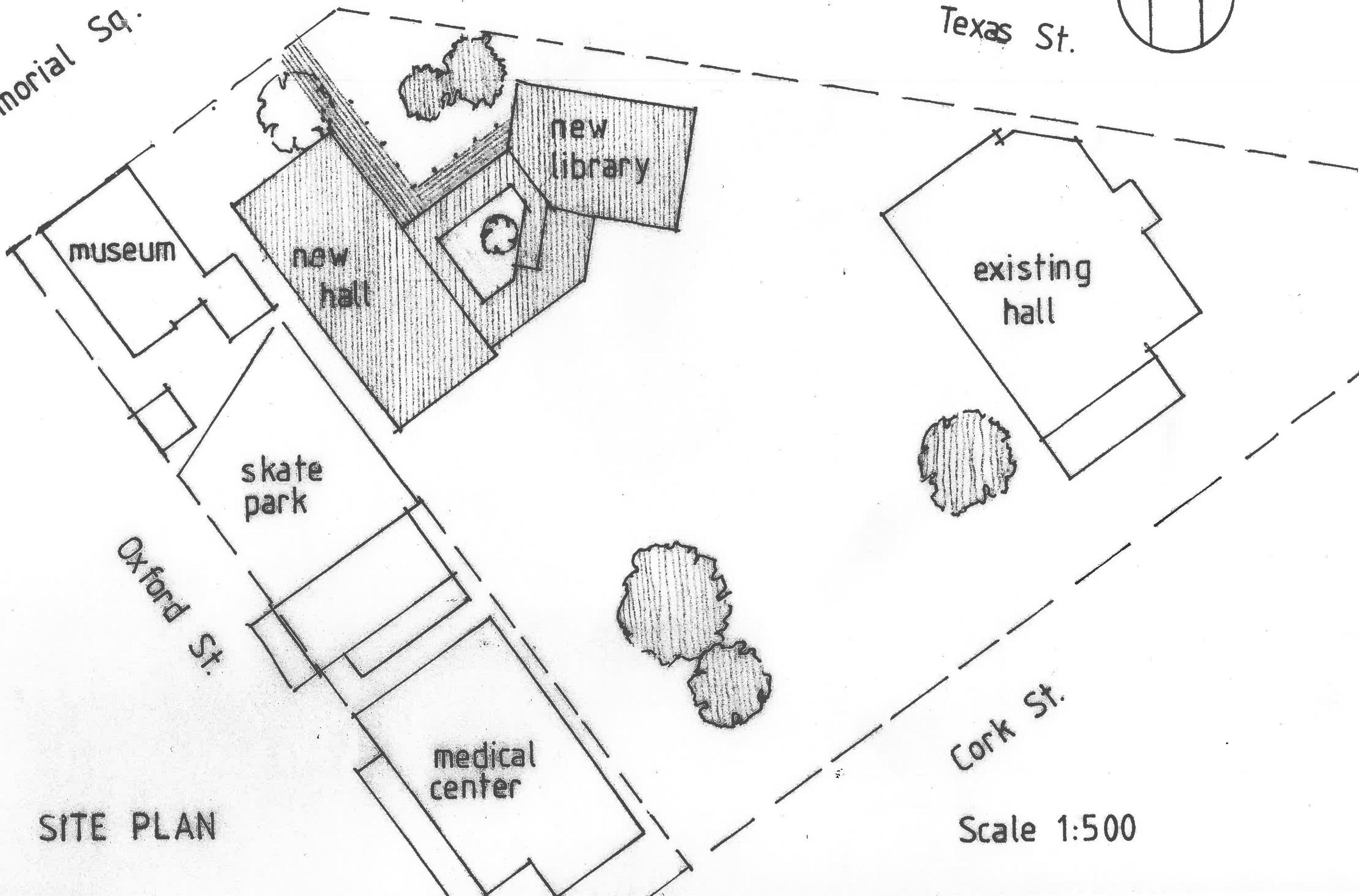
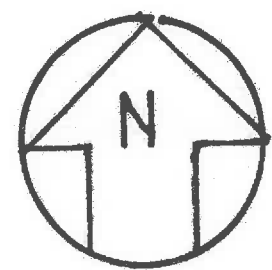
museum

NORTH ELEVATION



Memorial Sq.

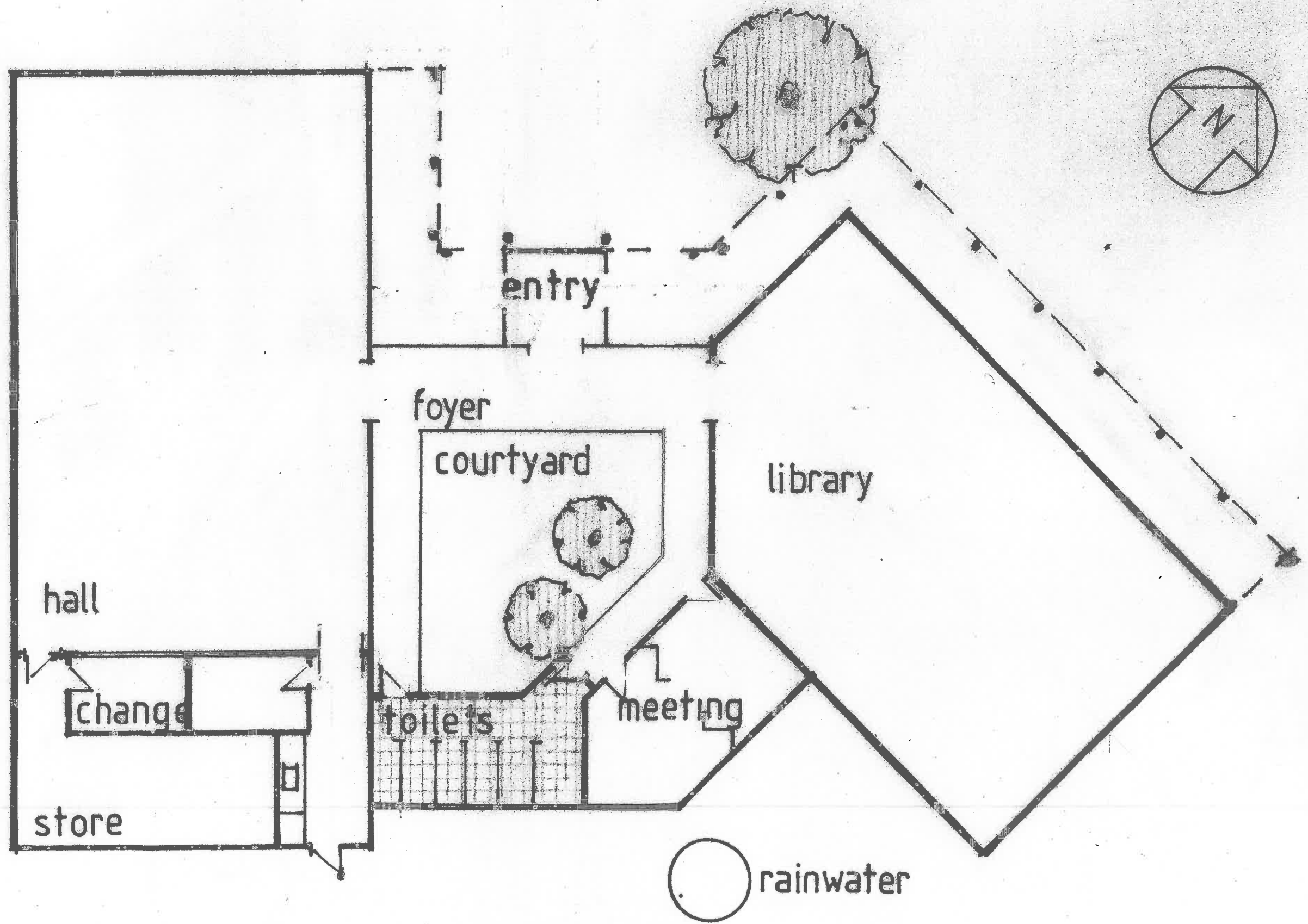
Texas St.



SITE PLAN

Cork St.

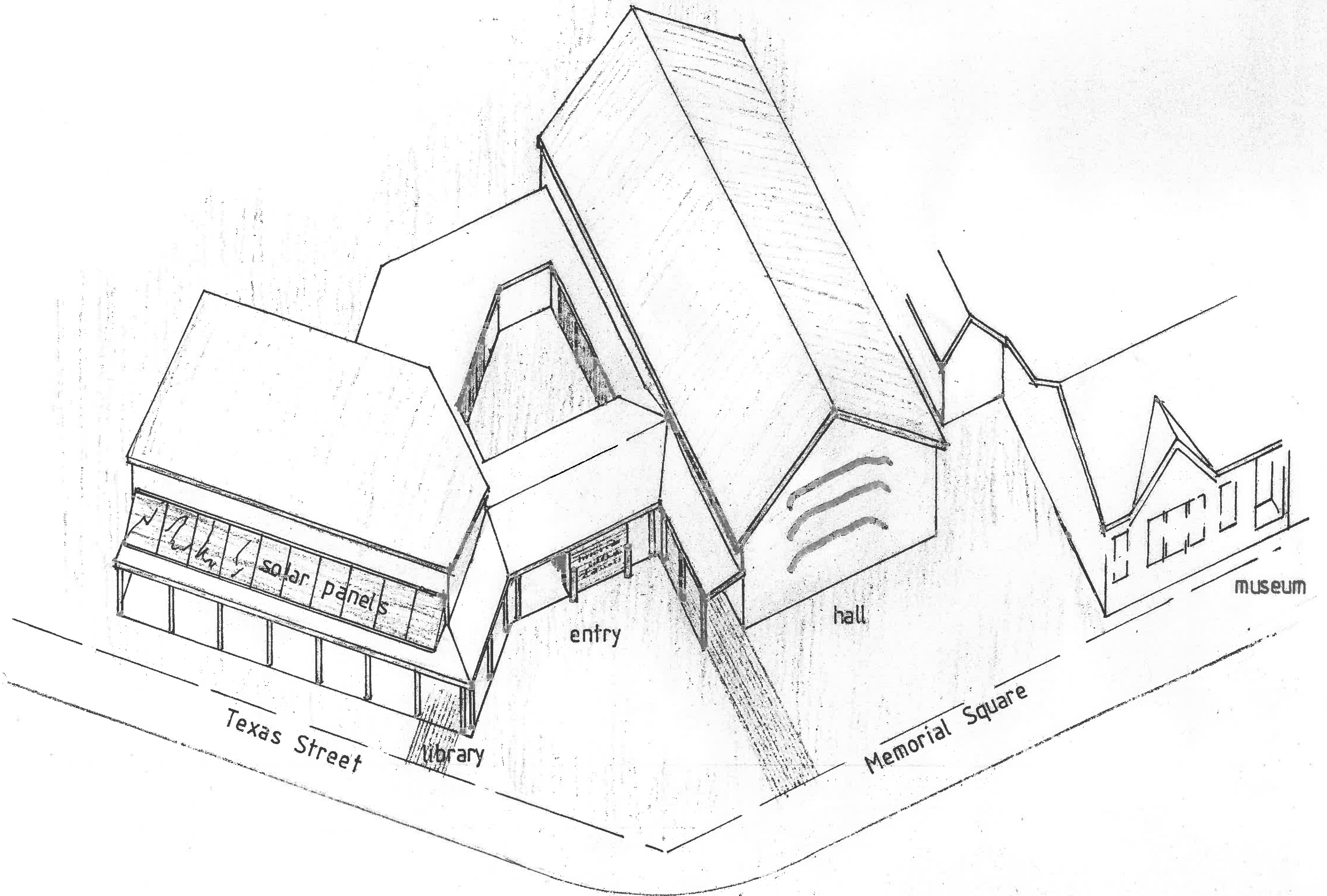
Scale 1:500



PLAN

Scale 1:200





A New Community Centre Concept for Martinborough

# **Appendix 2 – Statement from the Martinborough Community Board**

## Martinborough Community Board

Chair: Lisa Cornelissen  
10 Dublin Street West  
Martinborough 5711  
028 2553 4857



10 February 2016

### **STATEMENT TO SWDC**

Following the presentation to Martinborough Community Board (MCB) by the Martinborough Ratepayers and Residents Network (MRRN) dated the 21 Jan 2016 and presented on the 1<sup>st</sup> February 2016, the Board has met to discuss the issues raised in the presentation and the request by MRRN to advocate on their behalf to SWDC.

Having reviewed our 3 year plan, the Martinborough Community Board has declined to advocate for the MRRN and would like to reiterate our unanimous support for the Waihinga Centre project.

MCB believes that the consultation process the Council has undertaken since 2011 has been robust and Council has confirmed to MCB that they have met all statutory requirements for consultation.

We strongly believe that the delivery of this project is an essential element in achieving the vision for Martinborough set out in our three year plan, adopted on 17 February 2014 with minor revisions adopted on 2 November 2015.